

# Crystal™ Cotton

→ ENTRANCE MAT • INDOOR



 **Voordeelmat**  
WIJ DE MAAT VAN UW MAT | U DE KWALITEIT EN SERVICE VAN VOORDEELMAT

0031 521 788 934

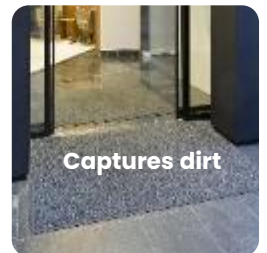
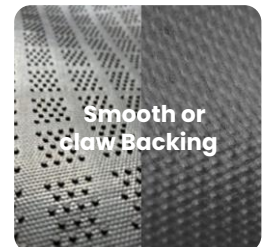
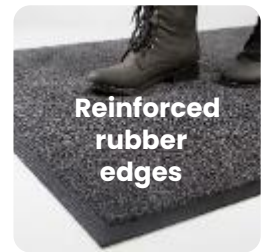
## → WHY CHOOSE THIS MAT?

Crystal mats feature a non-slip rubber backing and a 100% recycled fiber carpet, made from 50% cotton and 50% polyester. It's designed to stop dust, dirt and moisture at your door and provide a safe walking surface.

- The fiber blend, made up of 50% cotton and 50% polyester, is 100% recycled and offers **excellent absorption and dust control**
- Plush 1.050 gr/m<sup>2</sup> carpeted surface is perfect for **stopping damaging dirt and moisture** from entering facilities
- The rubber backing **prevents curling and cracking** in all types of weather
- There is **34% post-industrial recycled content** in the rubber polymer

## → SPECIFICATIONS

<b>Yarn</b>	50 % Cotton 50 % Polyester, fully recycled <ul style="list-style-type: none"><li>• <b>Carpet weight:</b> 1050 g/m<sup>2</sup></li></ul>
<b>Backing</b>	<ul style="list-style-type: none"><li>• <b>Primary backing:</b> 100% recycled PET non-woven</li><li>• <b>Rubber backing:</b> 100% nitrile rubber backing with 34% post-industrial recycled content in the polymer, phthalate free</li><li>• <b>Thickness:</b> 1.4 mm</li><li>• Also available in 3 mm rubber backing</li></ul>
<b>Border</b>	<ul style="list-style-type: none"><li>• <b>Thickness:</b> 2.5 mm</li><li>• <b>Width:</b> 2 cm</li></ul>
<b>Other properties</b>	<ul style="list-style-type: none"><li>• <b>Pile thickness:</b> 10 mm</li><li>• <b>Pile height:</b> 10 mm</li><li>• <b>Total weight:</b> 3050 g/m<sup>2</sup></li></ul>
<b>Recommended use</b>	Recommended for indoor commercial use at entryways, in lobbies, at front desks or anywhere additional traction or moisture control is needed.



## → STANDARD SIZES

60x85	75x85	85x115	85x150
85x300	115x180	115x200	115x240
115x250	115x300	150x200	150x240
150x250	150x300		

**Max. size:** 150 x 550 cm

**Size Tolerance:** +/- 2%

## → COLOUR



Anthracite

## → CLEANING INSTRUCTIONS



**Crystal™ Cotton mats can be cleaned in several different ways:**

1. They can be commercially laundered (see Laundering Instructions)
2. Vacuumed regularly (daily in high-traffic areas; weekly in lower-traffic applications)
3. Cleaned with an extractor, or hosed off as necessary to remove heavy soil

Hang to dry. Mats should always be dry before they are placed back in service and cooled before rolling.

### **Laundering Instructions**

1. Flush, 2-3 Min. on a medium water level with a maximum temperature of 49 °C
2. Flush (optional), 2-3 Min. on a medium water level with a maximum temperature of 27 °C
3. Break, 5-10 Min. on a high water level with a maximum temperature of 49 °C
4. Rinse, 2 Min. on a high water level with cold temperature
5. Rinse, 2 Min. on a high water level with cold temperature
6. Extract on low speed, 1-2 Min.
7. Shakeout with the drum turning, 1 Min.
8. Extract, on a maximum of 250G, 3-5 Min.
9. Dry (optional), 15-30 Min. with a maximum basket temperature of 82 °C
10. Cooldown, 5 Min.

### **Additional recommendations**

- For Heavy Soiled Mats, increase the temperature up to max. 60 °C. Frequent washing at this temperature can lead to color-loss.
- The break should not exceed pH of 9,5; use low pH non-ionic detergents.
- To prevent pilling on other mats, Cotton mats should not be washed with mats made of Nylon or other synthetic carpet yarns.
- Do not over-dry mats; Basket-temperature of the dryer should not exceed 82 °C.
- Insure that cotton mats are thoroughly dried to prevent mildew from forming in the cotton yarn.
- Lay mats flat following removal from washer; allow mats to cool before rolling.